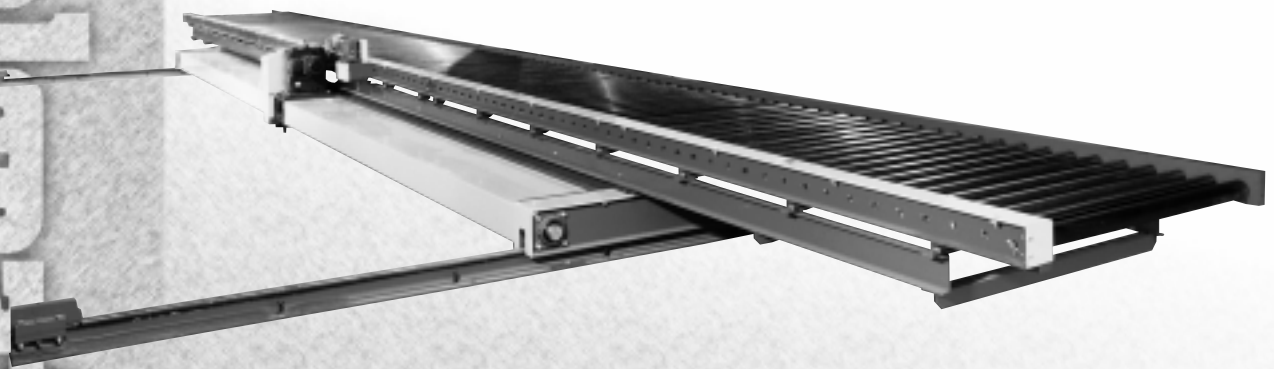
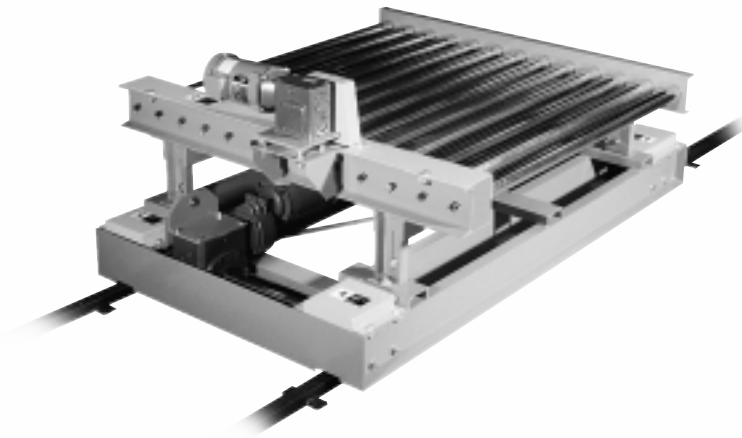


# Transfer Cars

Omni Metalcraft Corp

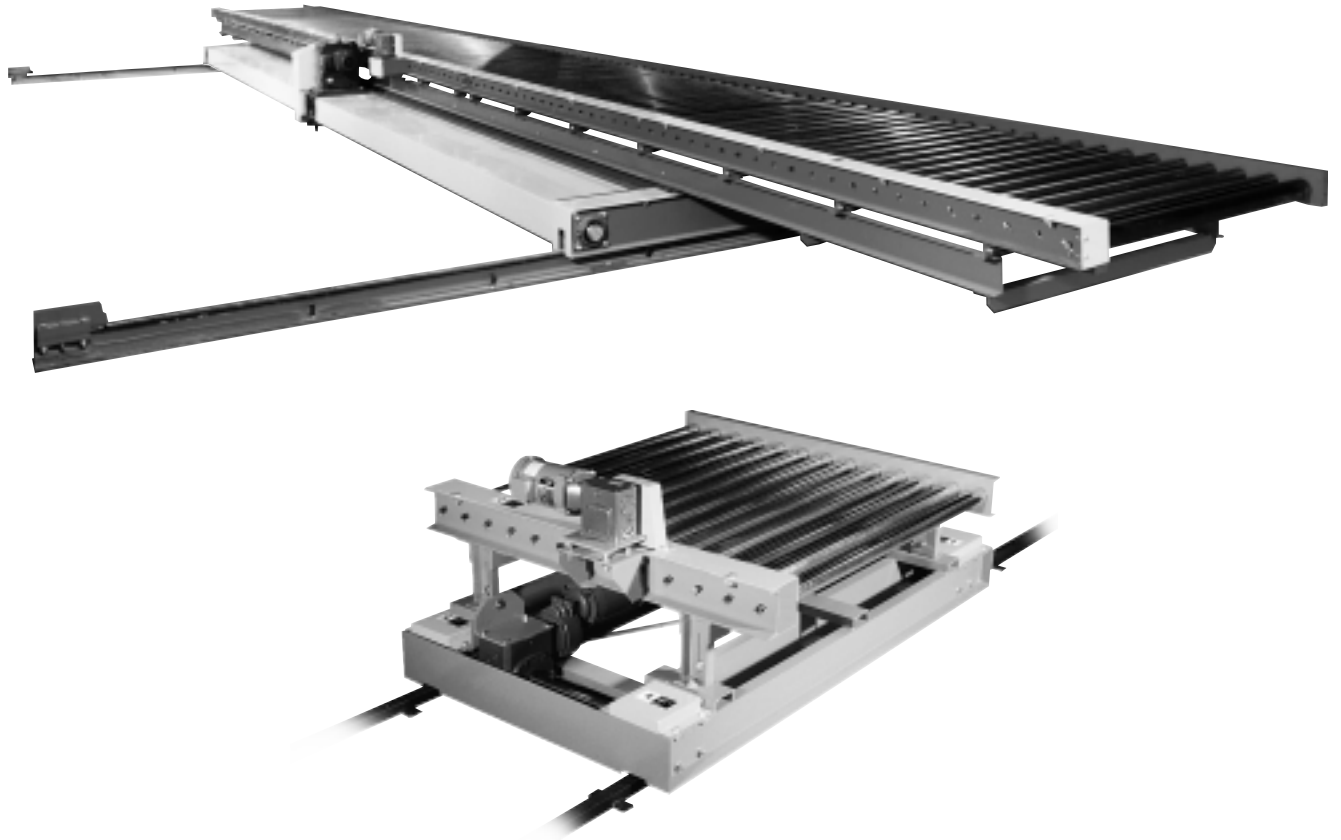


Transfer Cars

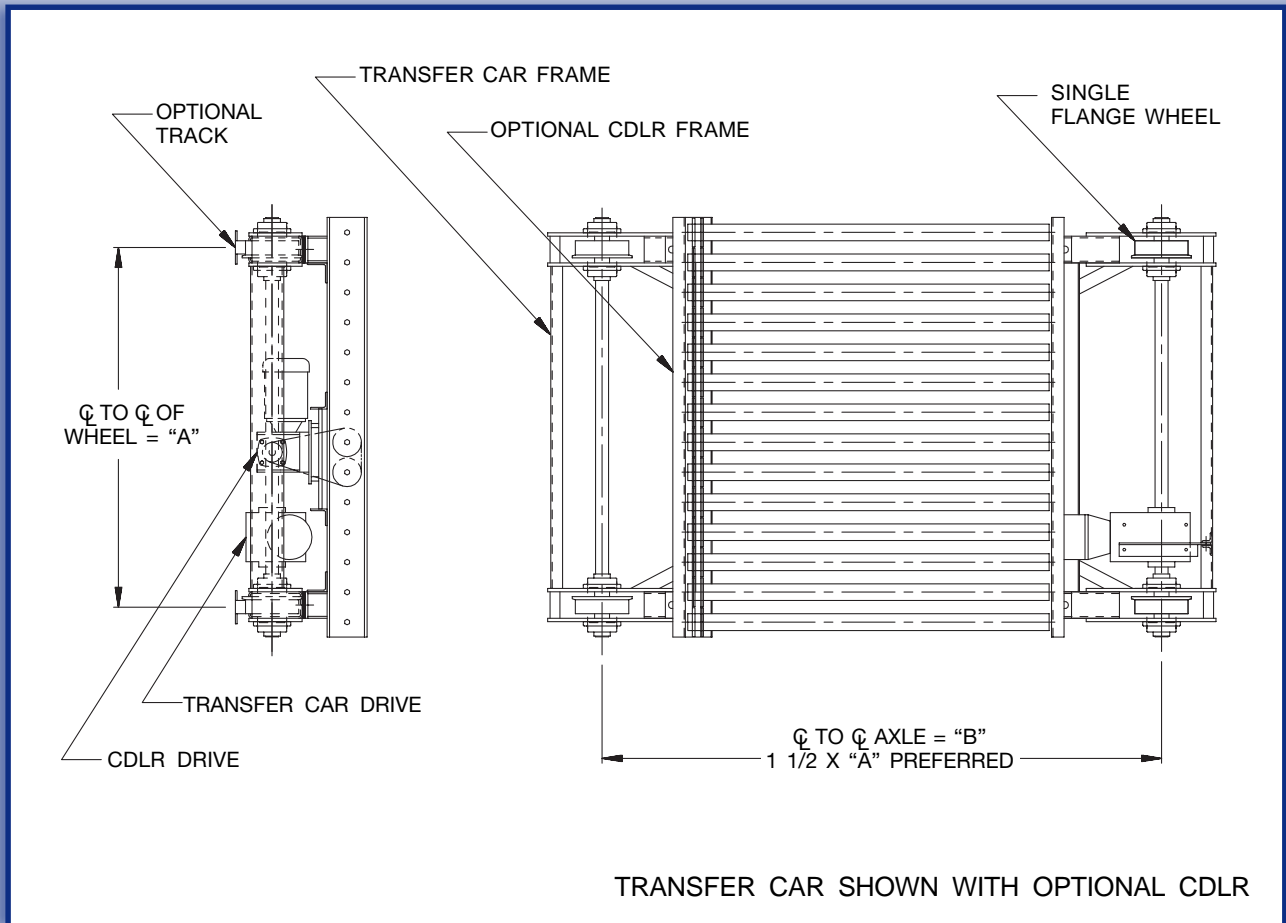
General Information .....	254
Standard Specifications .....	255

# Transfer Cars

Transfer Cars provide linear product transportation. By selecting optional equipment mounted on top of the transfer car, in-line and perpendicular loading and unloading can be accomplished. Options for lifting and tilting product are also available.



- Powered cars or manual push available
- Standard capacities up to 10,000 lbs.  
Specials for higher capacities
- Wide variety of lengths, widths and heights
- Built to your specifications



LIVE LOAD	STANDARD SPEED	HORSEPOWER	WHEEL TYPE
1000 lbs.	30 F.P.M.	1/2	1045
3000 lbs.	30 F.P.M.	3/4	1045 w/Heat Treat
5000 lbs.	30 F.P.M.	1	1045 w/Heat Treat
7500 lbs.	30 F.P.M.	1	1045 w/Heat Treat
10,000 lbs.	20 F.P.M.	1	1045 w/Heat Treat

**Standard Specifications:**

**Frame** - Heavy duty welded structural channel or tube frame provides a ridged base for optional equipment.

**Drive** - Sealed worm gear "C" face reducer powered by 230/460 V, 60 Hz, 3 Ph. brake motor. Inverter motors for variable speed are also available.

**Track** - Bar type or crane rail for powered cars and inverted angle for manual push cars. Tracks with anchor tabs are available in 20'-0" sections for laying long runs of track.

**Wheels** - Power cars: Single flanged wheels  
Manual push cars: V-groove & flat wheels

**Optional Equipment** - Optional equipment includes chain driven live roller, chain conveyor, lift table, tilt bed and others.

